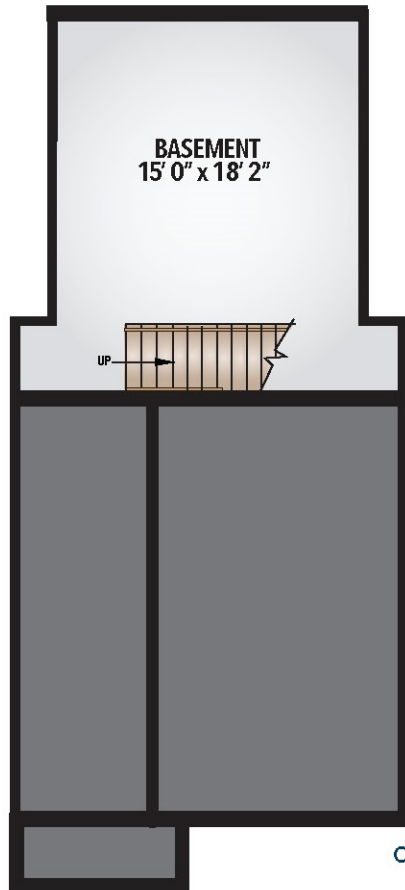


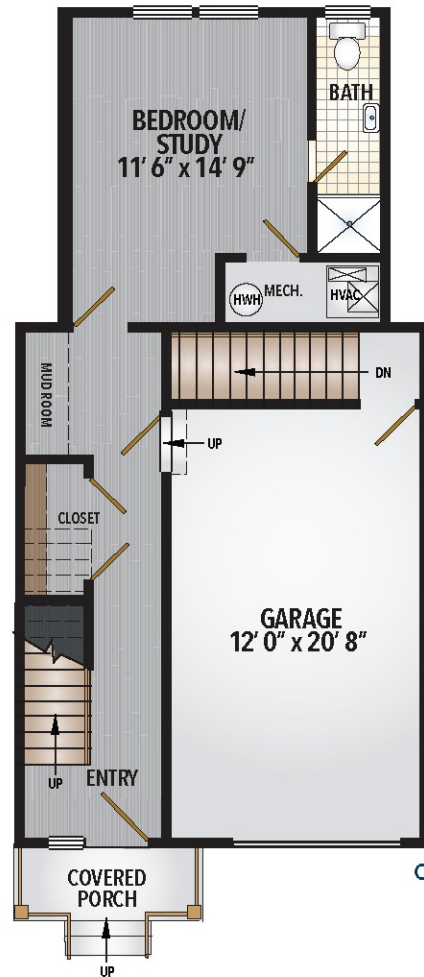
3 BEDROOM, 2 FULL & 2 HALF BATHS, TOWNHOME WITH OR WITHOUT BASEMENT

Approx. 1,988 SF, plus 333 SF basement (optional), and 262 SF garage

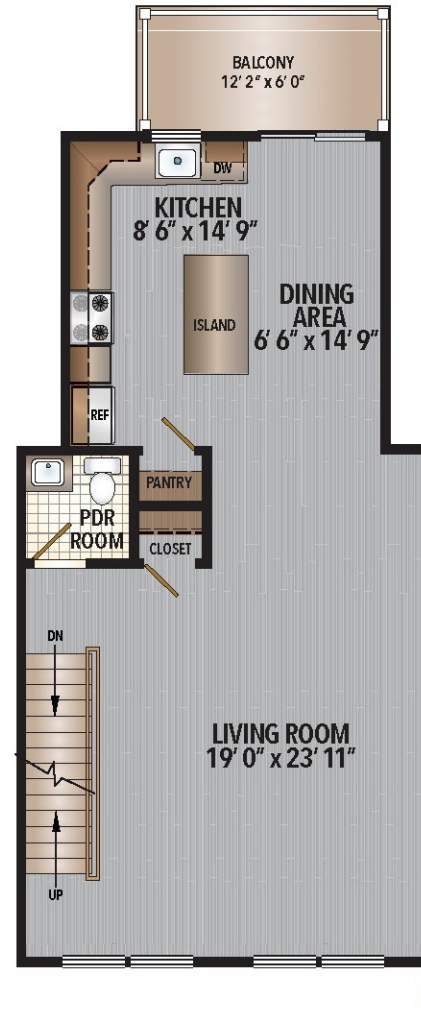
BASEMENT (SELECT UNITS)



FIRST FLOOR



SECOND FLOOR



THIRD FLOOR

