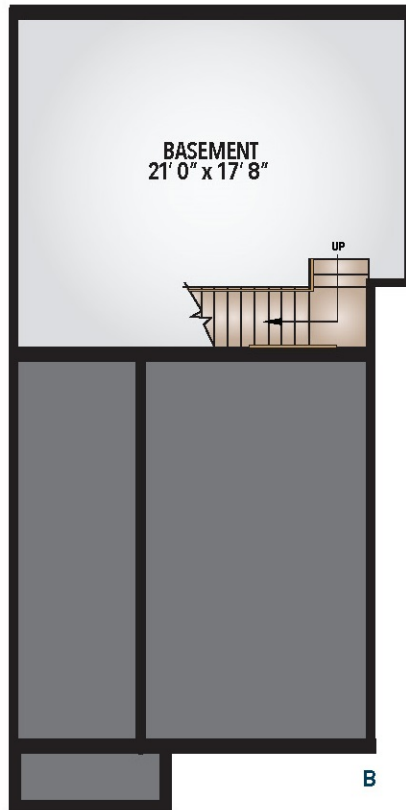


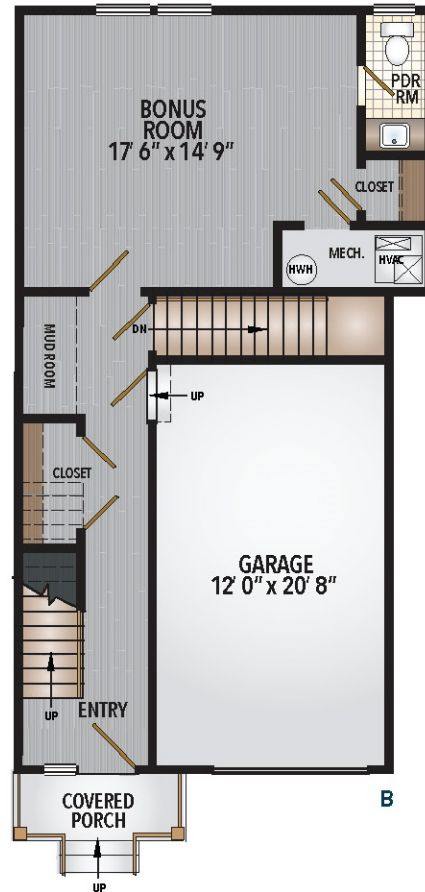
3 BEDROOM, 2 FULL & 2 HALF BATHS, TOWNHOME WITH OR WITHOUT BASEMENT

Approx. 2,323 SF, plus 415 SF basement
(optional), and 269 SF garage

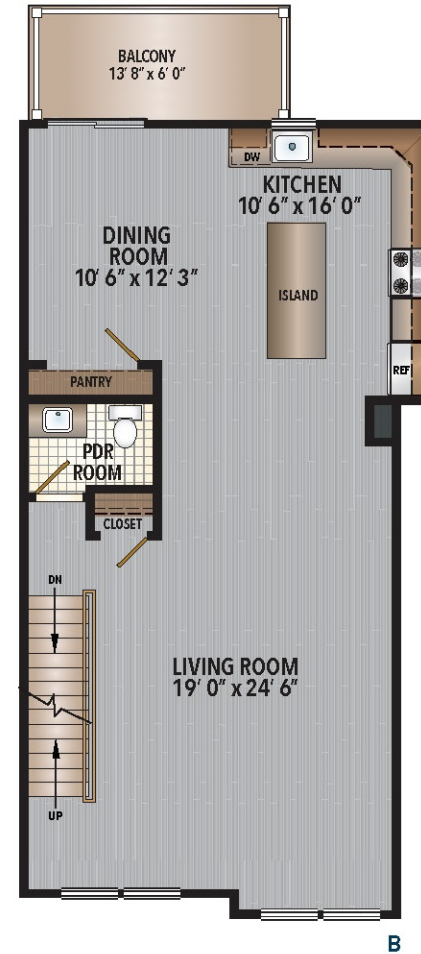
BASEMENT (SELECT UNITS)



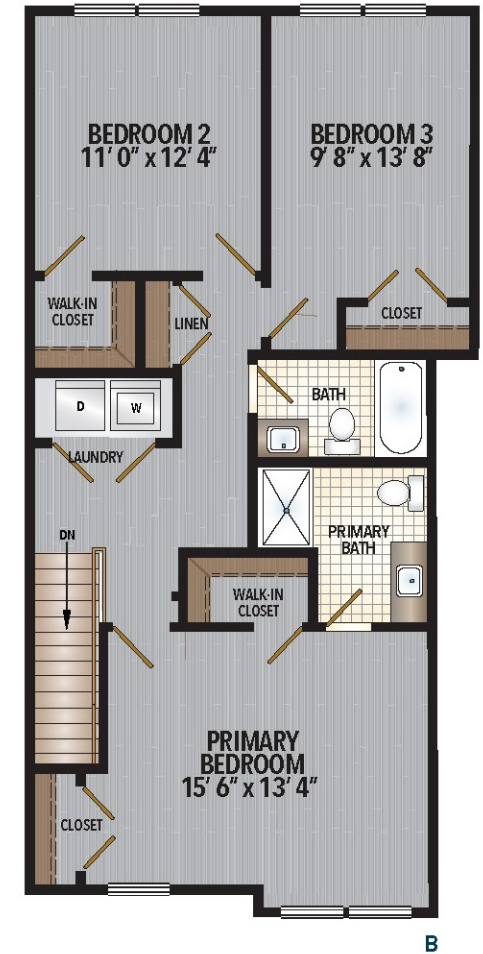
FIRST FLOOR



SECOND FLOOR



THIRD FLOOR



Illustrations are a graphic representation of the home plans. All dimensions are approximate and subject to variation.