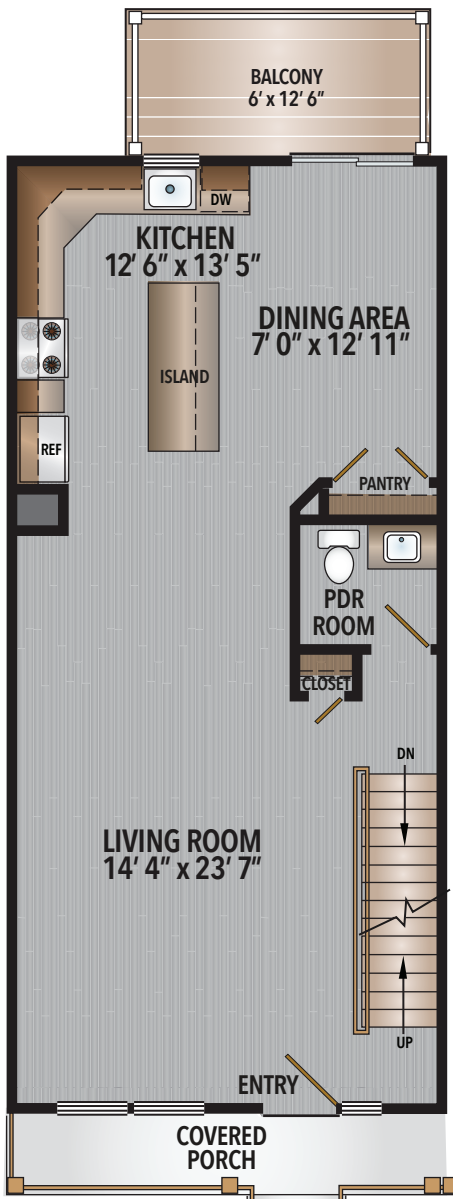
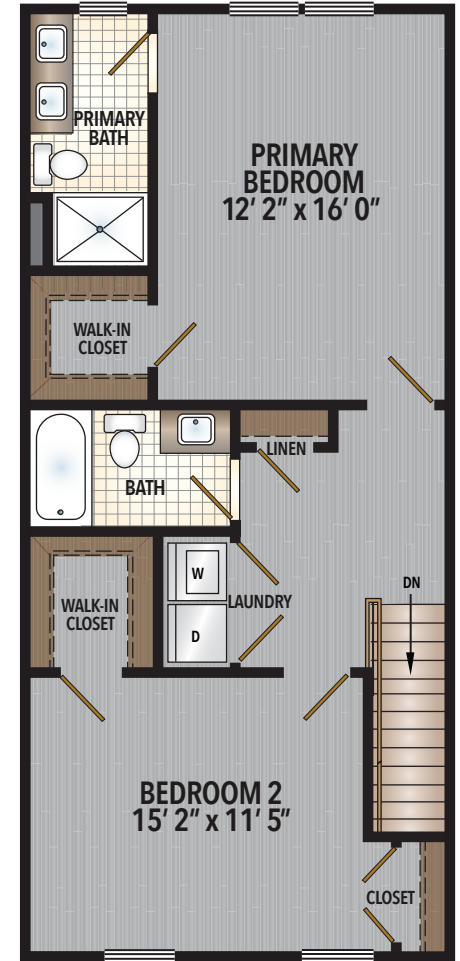


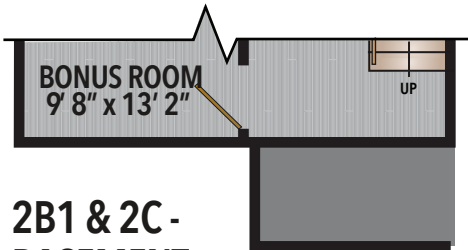
2B - BASEMENT



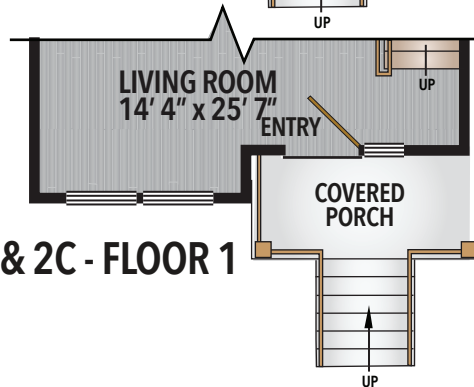
2B - FLOOR 1



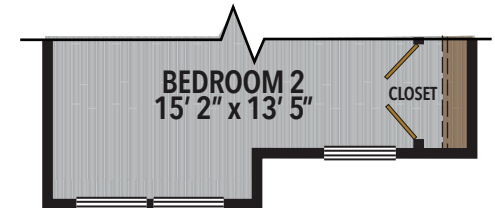
2B - FLOOR 2



2B1 & 2C - BASEMENT



2B1 & 2C - FLOOR 1



2B1 & 2C - FLOOR 2

2 BEDROOM TOWNHOMES (2B, 2B1, & 2C)
 2B - APPROX. 1,630 s.f. / 2B1 & 2C - 1,750 s.f.