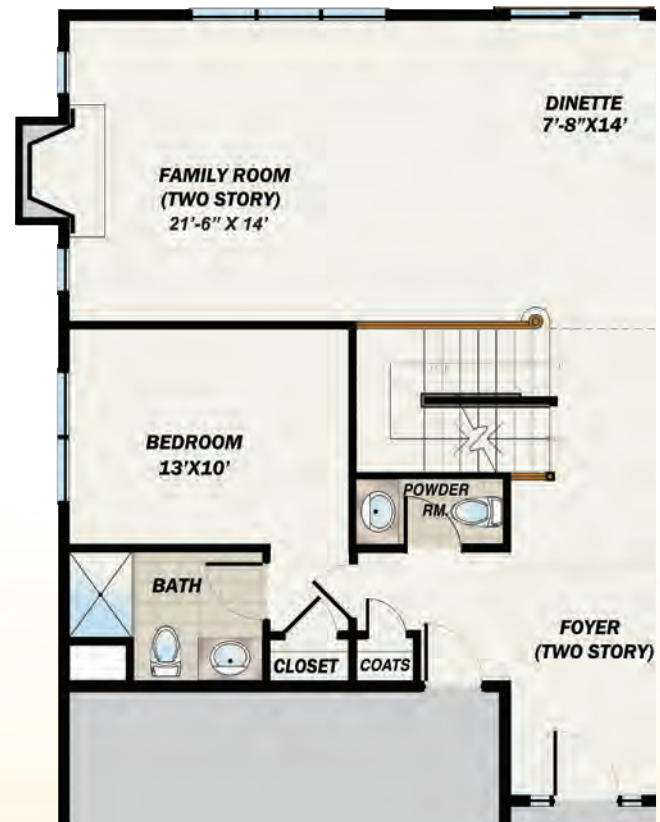


the **DOGWOOD** FLOOR PLANS

2,800 SF
 4 Bedrooms PLUS Study
 3 Baths (3-1/2 Baths with Optional Powder Room)
 2 Car Garage



Optional First Floor
 with Bedroom Suite and added Powder Room

First Floor



Second Floor



Optional Finished Basement

890 SF of Additional Finished Space
Additional Bedroom
Additional Full Bath



All dimensions are approximate and subject to variation. Window configurations may vary based upon elevation chosen. Patio position and location may vary. Purchasers must review detailed architectural drawings available in sales office to ensure accuracy and understanding of home chosen.



www.premierdevelopment.com

157 Perrine Road
 South Brunswick, NJ

