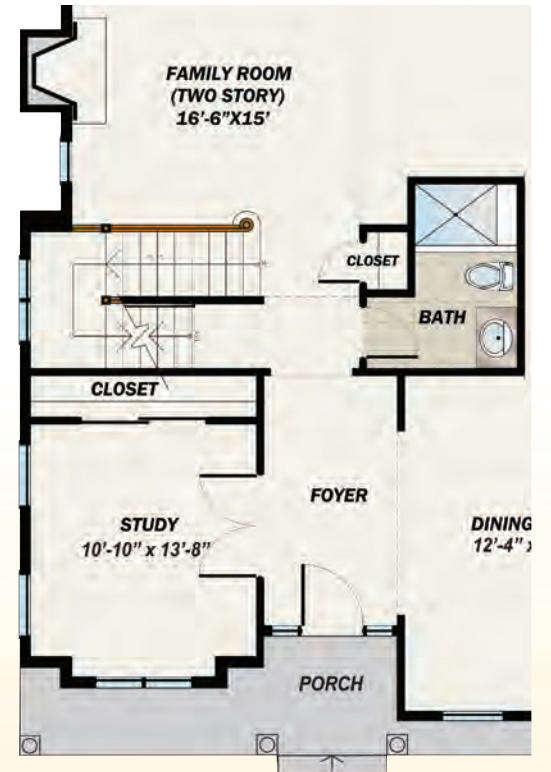


# the CYPRESS FLOOR PLANS

**2,800 SF**  
 4 Bedrooms  
 3-1/2 Baths (4 Baths with Optional Study)  
 2 Car Garage



**First Floor**



**First Floor**  
*(Optional Study)*



**Second Floor**



**Optional Finished Basement**

**781 SF of Additional Finished Space**  
**Additional Bedroom**  
**Additional Full Bath**



[www.premierdevelopment.com](http://www.premierdevelopment.com)

157 Perrine Road  
 South Brunswick, NJ

All dimensions are approximate and subject to variation. Window configurations may vary based upon elevation chosen. Patio position and location may vary. Purchasers must review detailed architectural drawings available in sales office to ensure accuracy and understanding of home chosen.

