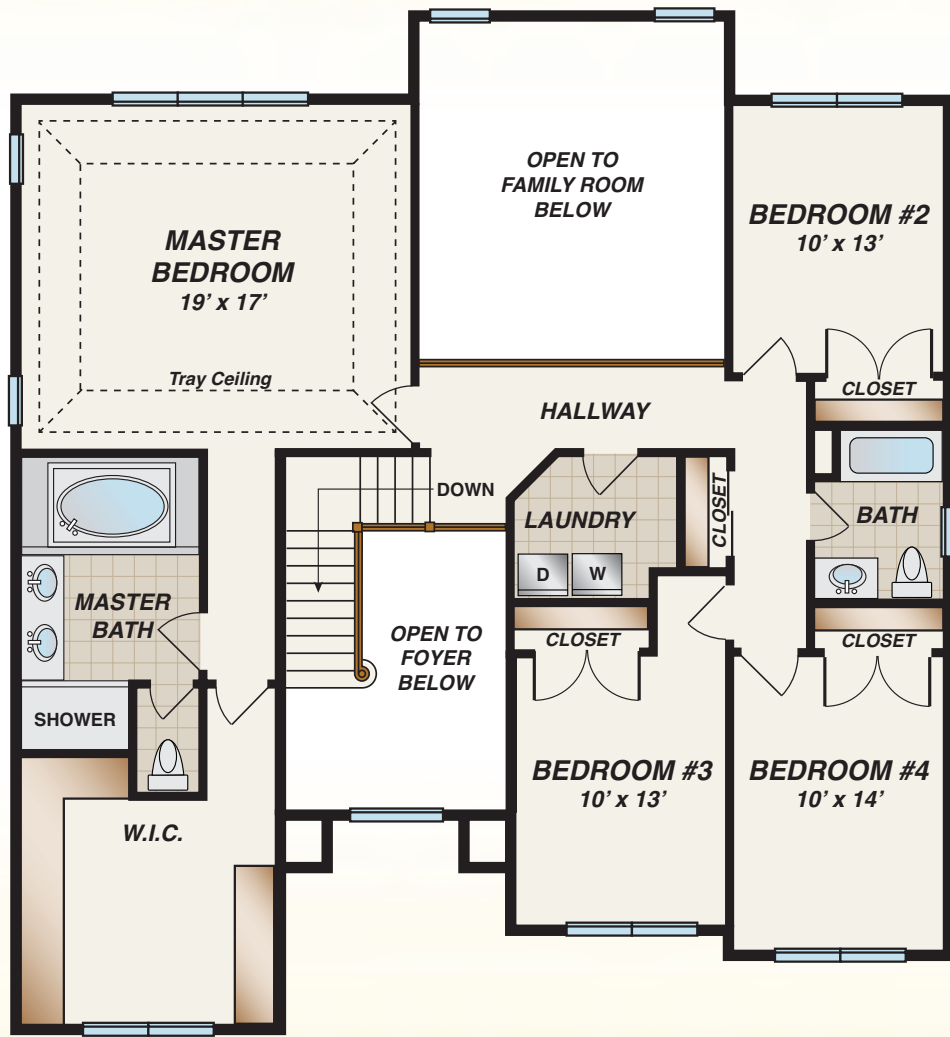
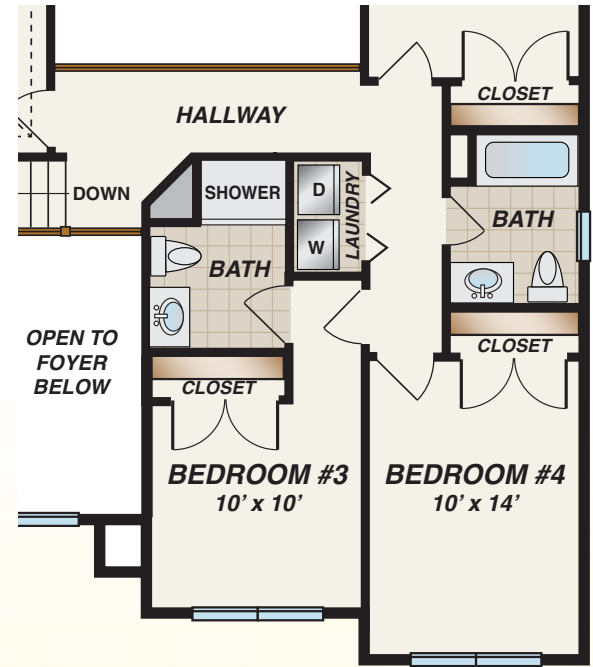


# the **BIRCH** FLOOR PLANS

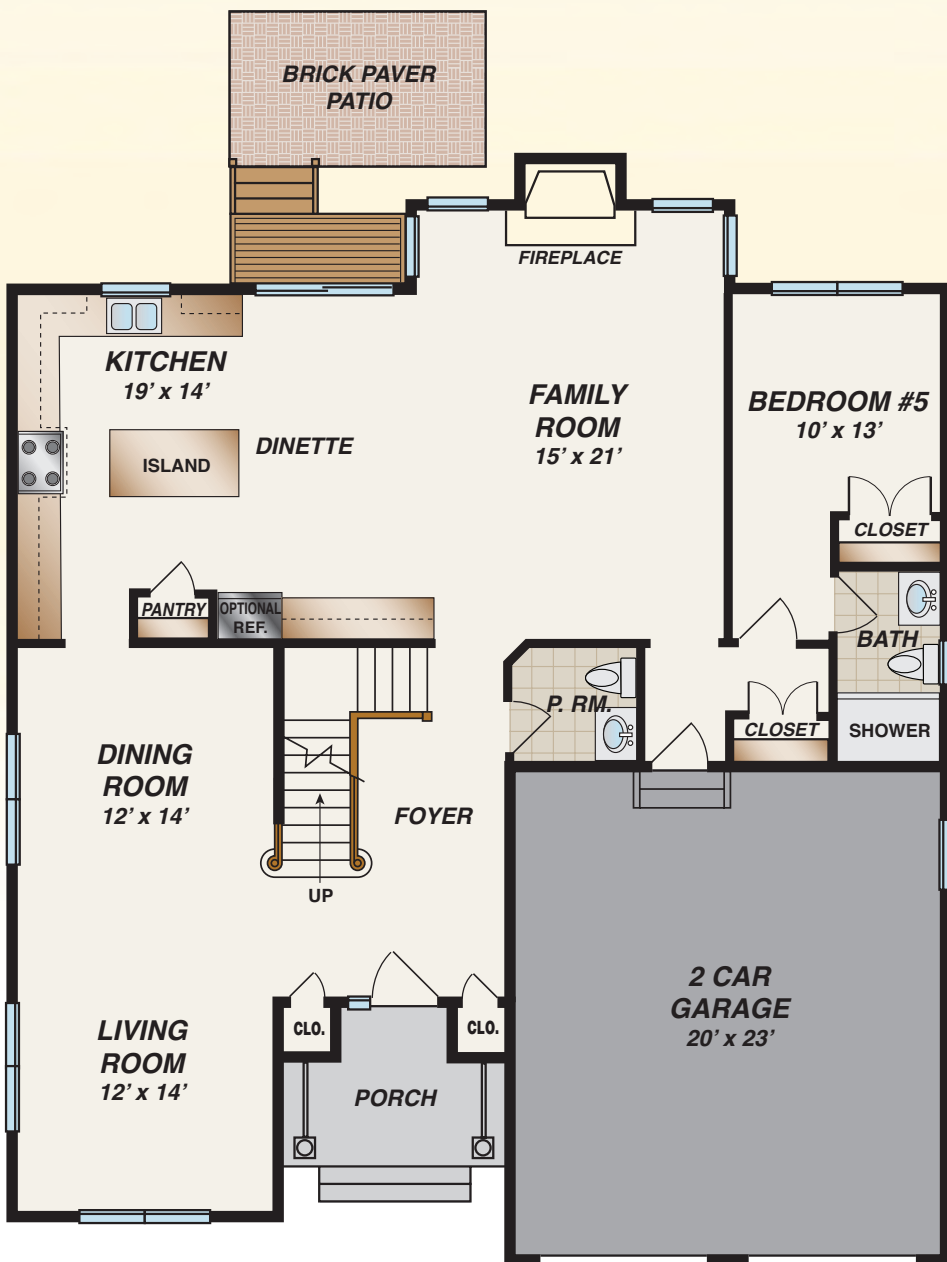


**Second Floor**

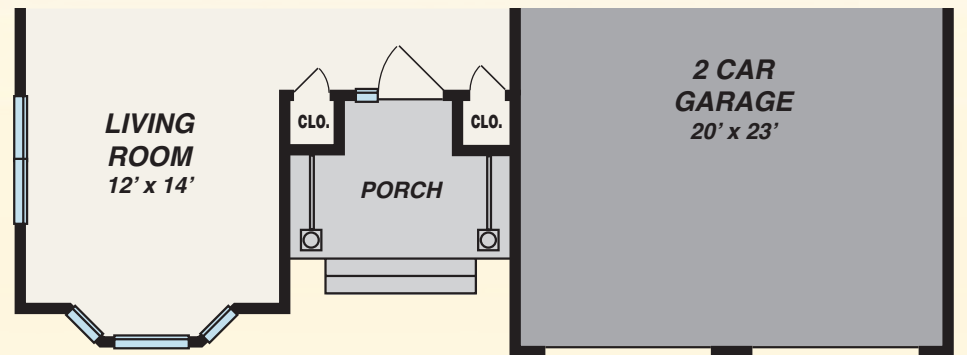
**3,000 SF**  
 5 Bedrooms  
 3-1/2 Baths (4-1/2 with Optional Princess Bath)  
 2 Car Garage



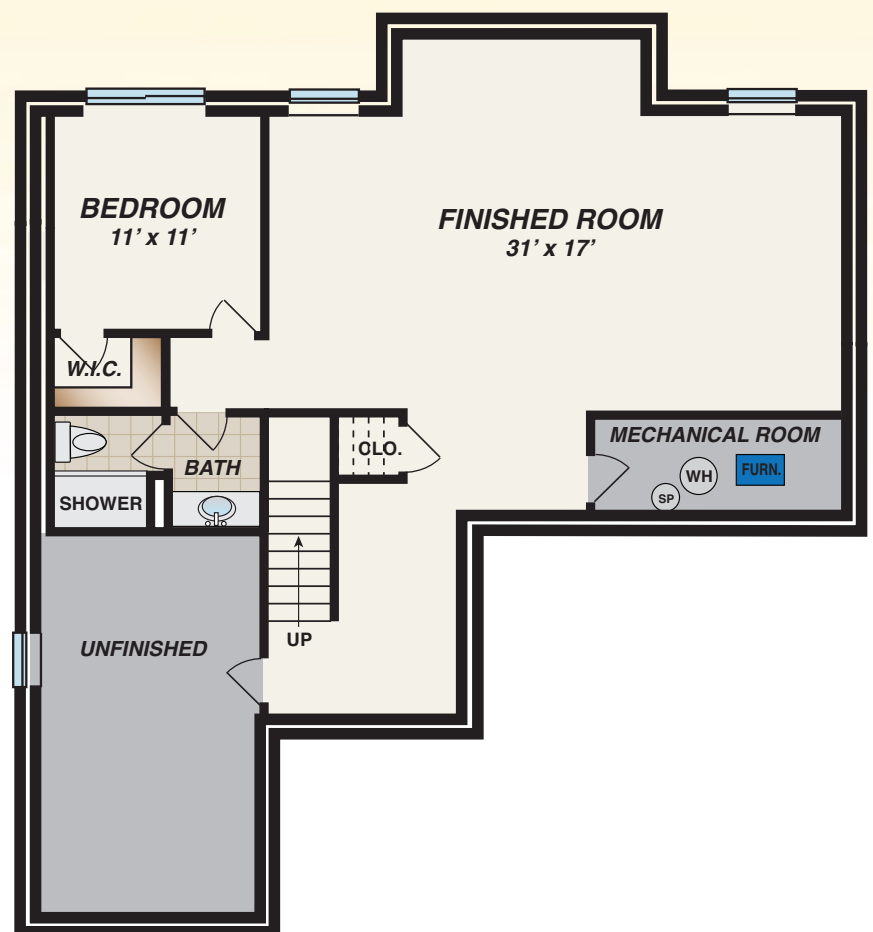
**Second Floor**  
 (Optional Princess Bath)



**First Floor Elevation B & C**



**First Floor Elevation A**



## Optional Finished Basement

**987 SF of Additional Finished Space**  
 Additional Bedroom  
 Additional Full Bath



[www.premierdevelopment.com](http://www.premierdevelopment.com)

157 Perrine Road  
 South Brunswick, NJ

All dimensions are approximate and subject to variation. Window configurations may vary based upon elevation chosen. Patio position and location may vary. Purchasers must review detailed architectural drawings available in sales office to ensure accuracy and understanding of home chosen.

