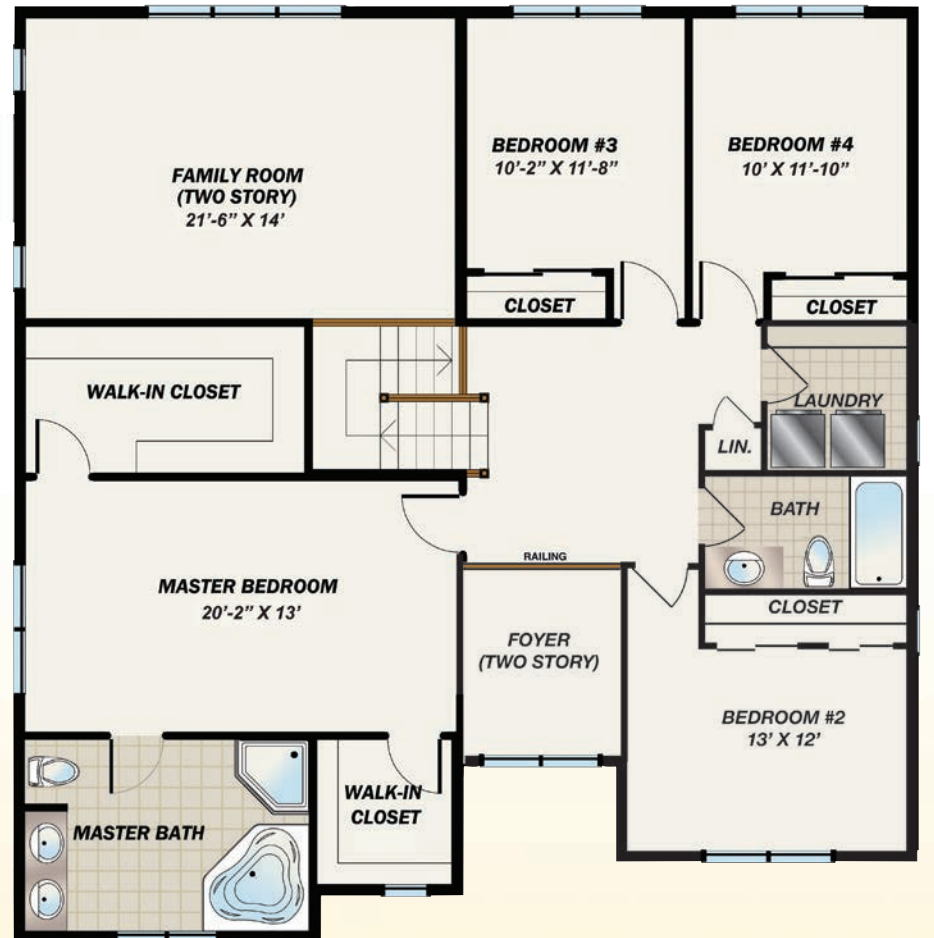


the **DOGWOOD** FLOOR PLANS

2,800 SF
PLUS 890 SF Finished Basement
3,690 SF TOTAL
 5 Bedrooms PLUS Study
 4 Baths (5 Baths with Optional Princess Bath)
 2 Car Garage



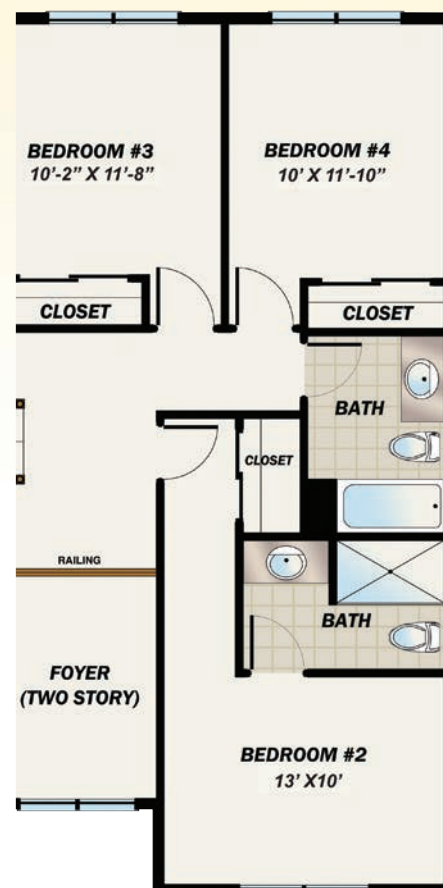
First Floor



Second Floor



Basement



Second Floor (Option Princess Bath)



All dimensions are approximate and subject to variation. Window configurations may vary based upon elevation chosen. Purchasers must review detailed architectural drawings available in sales office to ensure accuracy and understanding of home chosen.



www.premierdevelopment.com

157 Perrine Road
 South Brunswick, NJ

