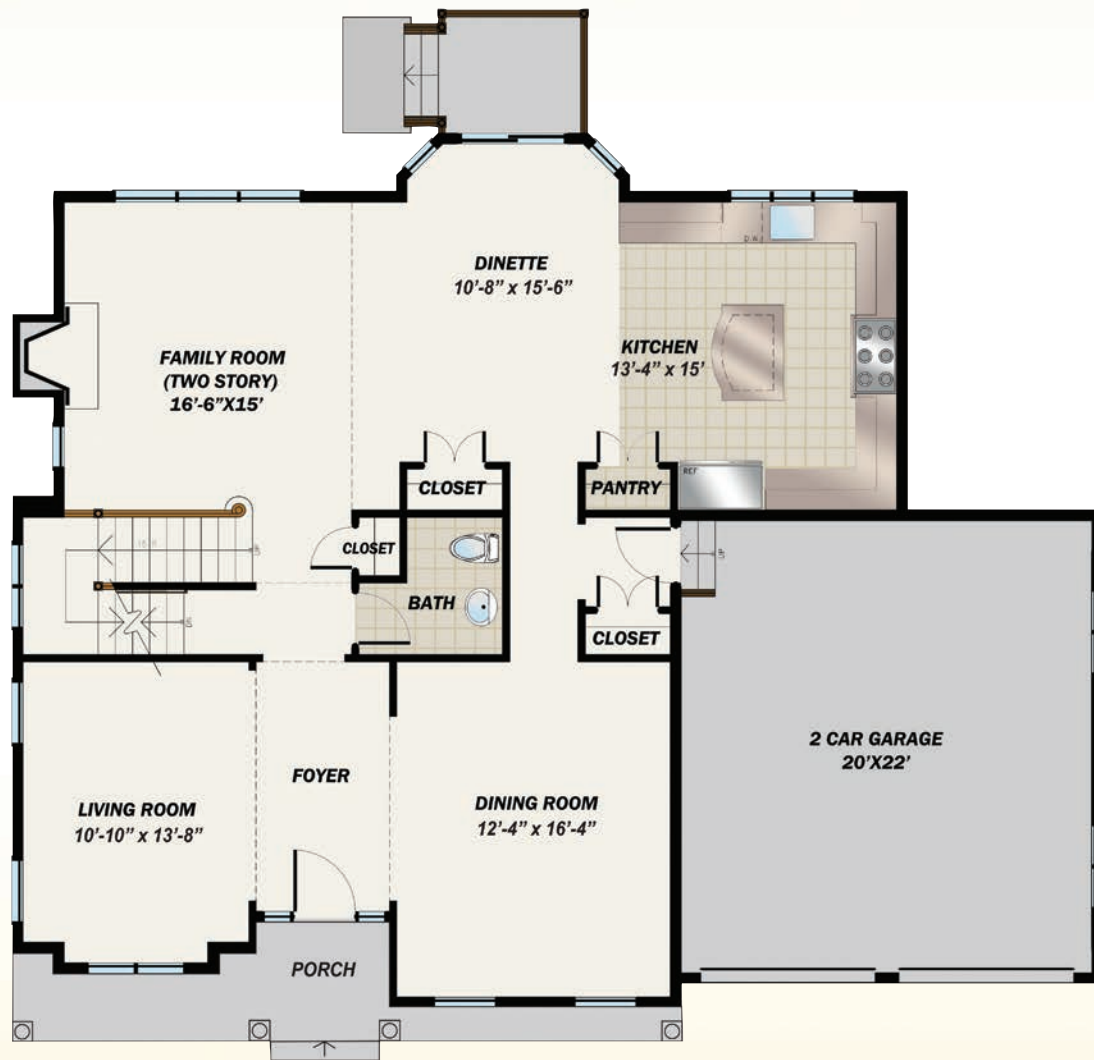
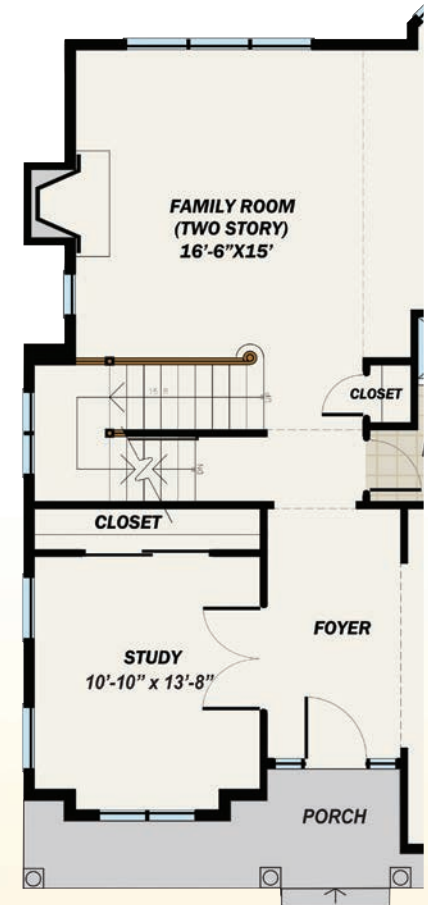


# the CYPRESS FLOOR PLANS

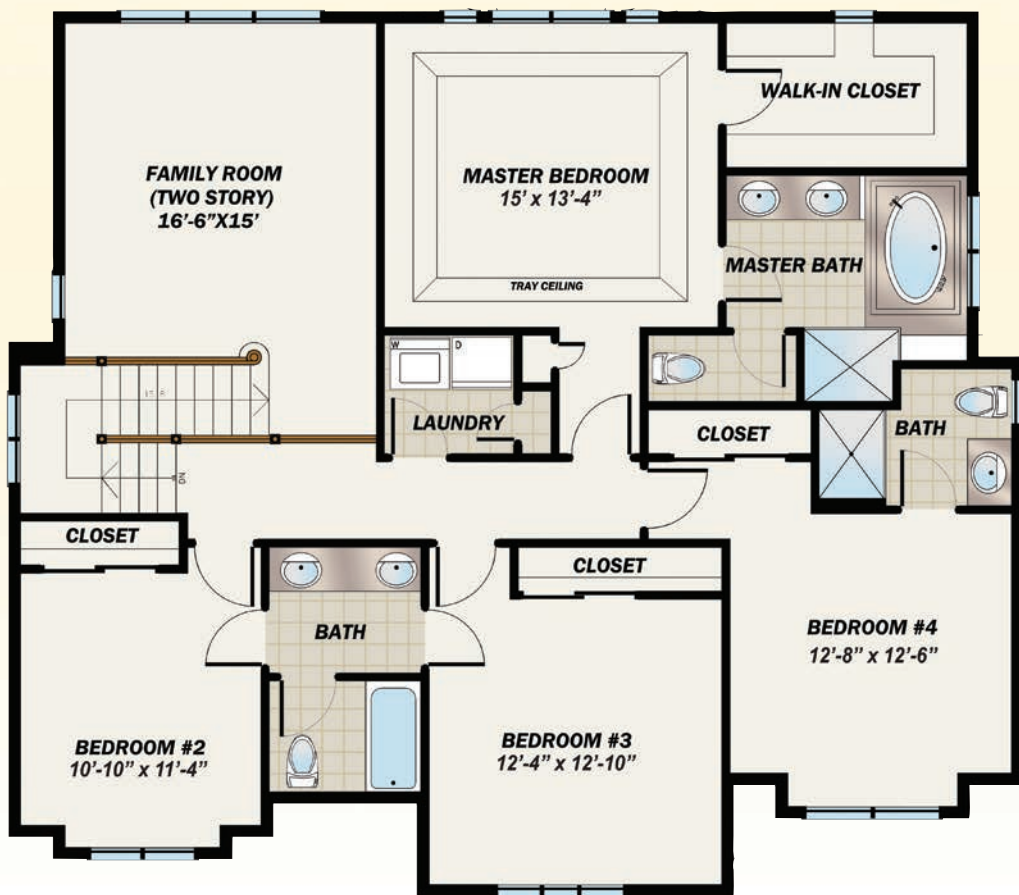
**2,800 SF**  
**PLUS 718 SF Finished Basement**  
**3,518 SF TOTAL**  
 5 Bedrooms  
 4-1/2 Baths  
 2 Car Garage



**First Floor**



**First Floor (Optional Study)**



**Second Floor**



**Basement**



[www.premierdevelopment.com](http://www.premierdevelopment.com)

157 Perrine Road  
 South Brunswick, NJ

All dimensions are approximate and subject to variation. Window configurations may vary based upon elevation chosen. Purchasers must review detailed architectural drawings available in sales office to ensure accuracy and understanding of home chosen.

