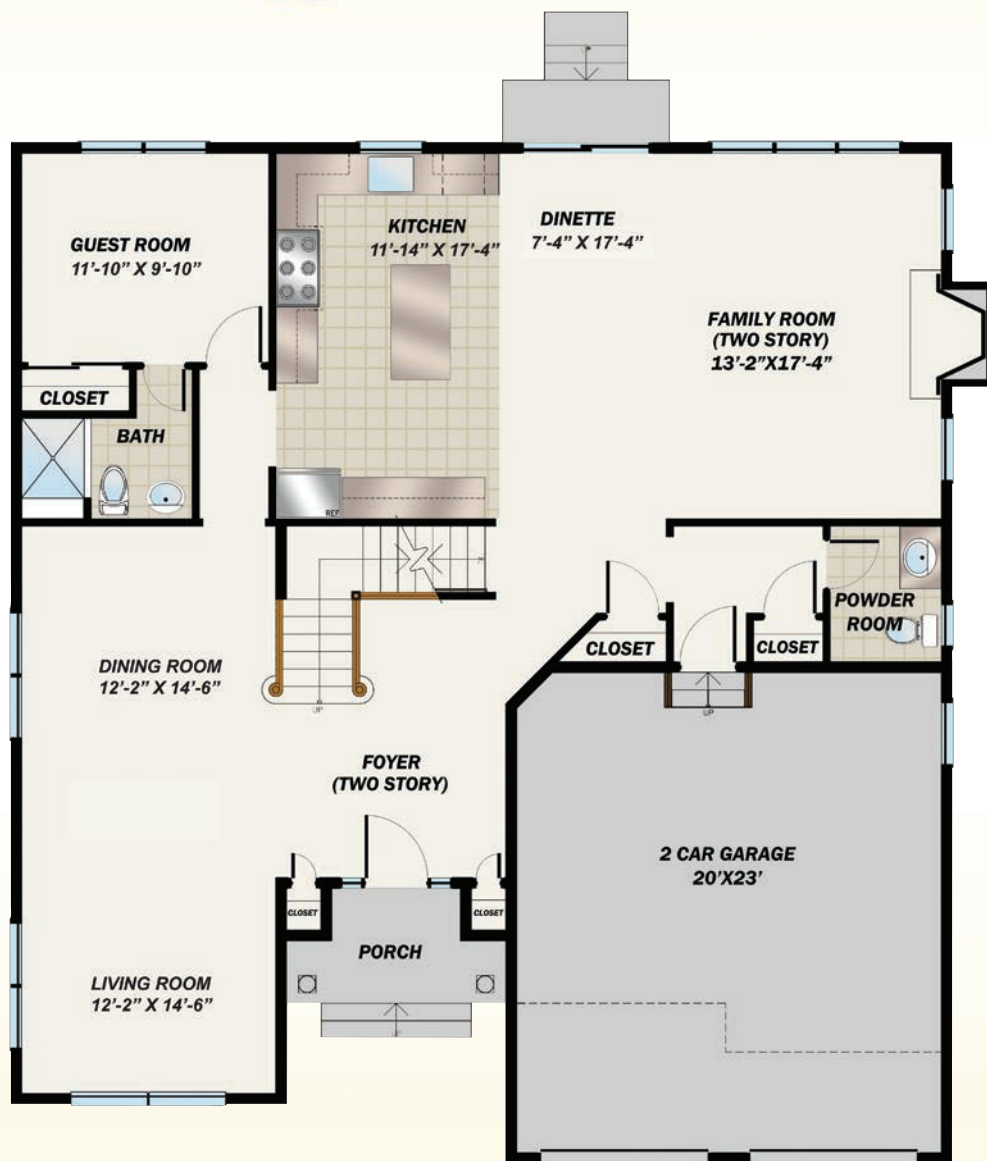
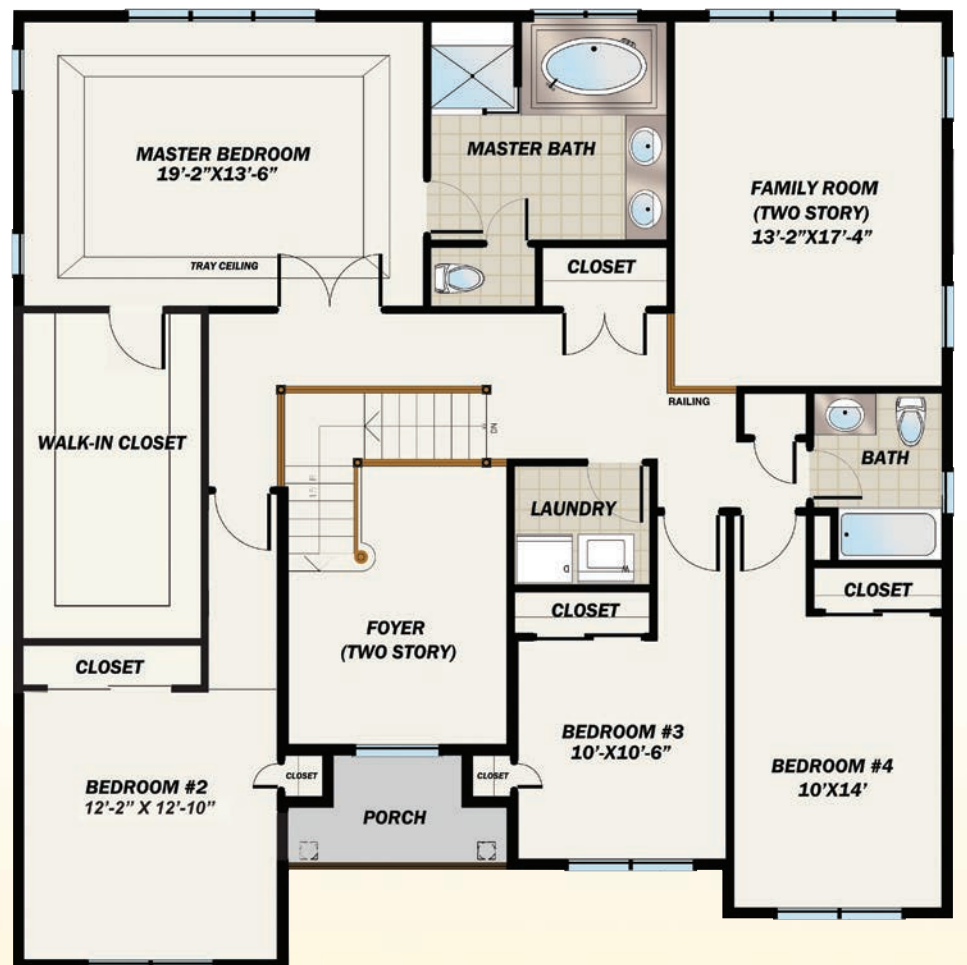


# the **BIRCH** FLOOR PLANS

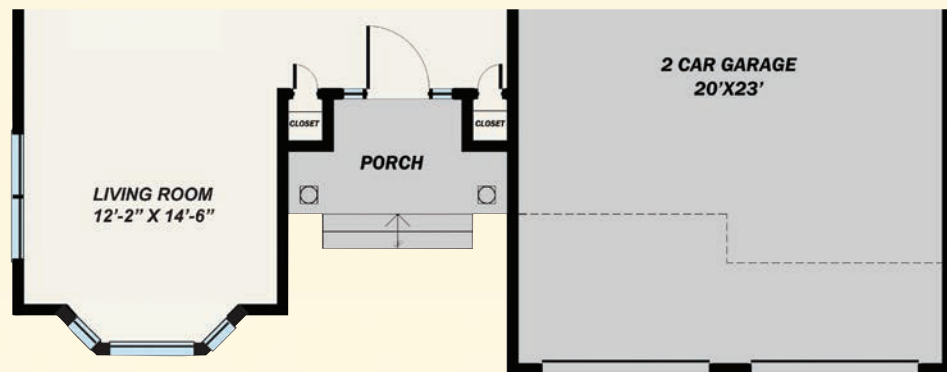


**First Floor** *Elevation B & C*

**3,000 SF**  
**PLUS 987 SF Finished Basement**  
**3,987 SF TOTAL**  
 6 Bedrooms  
 4-1/2 Baths (5-1/2 Baths with Optional Princess Bath)  
 2 Car Garage



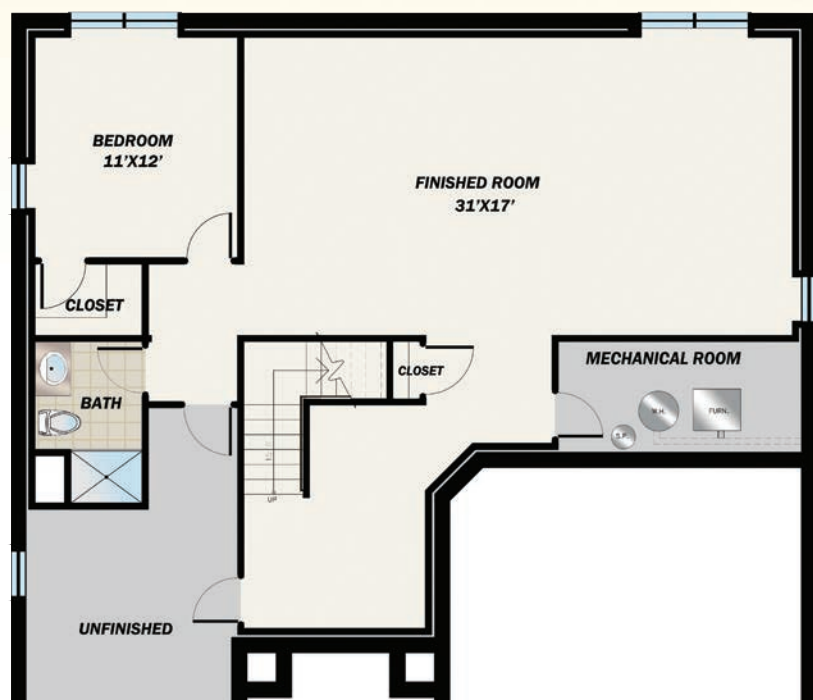
**Second Floor**



**First Floor** *Elevation A*



**Second Floor** *(Optional Princess Bath)*



**Basement**



All dimensions are approximate and subject to variation. Window configurations may vary based upon elevation chosen. Purchasers must review detailed architectural drawings available in sales office to ensure accuracy and understanding of home chosen.



[www.premierdevelopment.com](http://www.premierdevelopment.com)

157 Perrine Road  
 South Brunswick, NJ

